

GEOVARUNA

Go the extra miles through excellence

COMPANY PROFILE

PT. GEOVARUNA TEKNOLOGI INDONESIA
Geospatial Geoscience and Engineering Services
Ruko 42E Jalan Dakota No.42E Bandung 40175 - 022 20569987

✉ operation@geovaruna.com www.geovaruna.com



PROFILE CONTENT

About Us	01
Our Services	02
Surveying & Mapping Services	03
Geoscience Services	04
Geospatial Services	06
Engineering Services	08
Our Commitment	09
Our Clientelle	10
Our Key Person	11
Experience Records	12

A large offshore vessel, possibly a survey ship, is docked at night. The vessel is illuminated with bright lights, and a blue crane is visible on its deck. In the foreground, a surveying tripod with a yellow sensor is set up on a dark surface. Several workers in orange safety gear are visible near the vessel.

ABOUT US

Geovaruna Indonesia is a professional Geospatial Geosciences and Engineering Services provider that specializes in the broad range of surveying, monitoring, technical support, and related consulting scope of work. We have been providing these services since 2015 and already have experiences to perform the job almost in all over Indonesia region. To strengthen our value in the industry, in 2019 under the laws and regulation in force in Indonesia we officially established our team as registered Private Limited company named PT Geovaruna Teknologi Indonesia.

Geovaruna Indonesia has committed and established the implementation of ISO 9001:2015, ISO 14001:2015, and ISO 45001:2018 to strongly maintain and improve the HSE management system of our operations, employees, and partners. These standards are also to achieve our goal in providing customers' satisfaction through the effectiveness of quality management system implementation.

Geovaruna Indonesia with its vast experience and expertise, provides the company the strength to offer innovative, quality, and effective solutions to our clients. We have the qualified geoscience engineers, surveyors, hydrographers, geophysicists, and partners coming together to provide professional services that are efficient and reliable. Our team of professionals are the key to the company's impressive growth during the short period of time.

Our Mission

Our mission is to provide professional services that consistently exceed client requirements, using an adaptable but rules-complying method, utilizing suitable technology and getting done in time with an efficient cost.

Our Vision

Our vision is to reach the global standard and be the most applicable and innovative geospatial geoscience and engineering services provider in Indonesia.



Geovaruna Indonesia provide various and wide range of geospatial geoscience and engineering services but not limited to earthworks, topographic survey, aerial mapping, hydro-oceanographic survey, ocean physical measurements, geophysical & geological survey, environmental modelling, coastal development plan, and GIS analysis. We brings horizontal and vertical integration of those services to provide complete solution and further analysis for the job

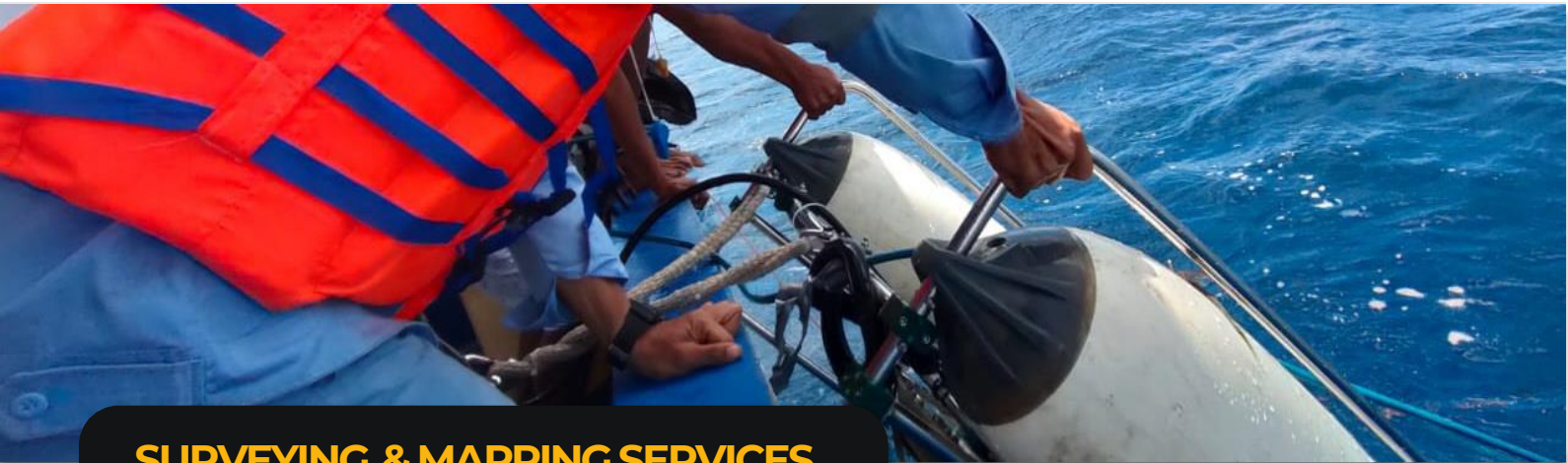
Our Staff employs the latest methods, technology and software to generate survey drawings and models that meet with varying specification.

Our management team supports our clients in the effective utilization of our surveys and offer consultancy services to projects with challenging survey requirements.

Our services include

- **Surveying and Mapping**
- **Geospatial services**
- **Geoscience services**
- **Engineering services**
- **Manpower supply (MPS)**

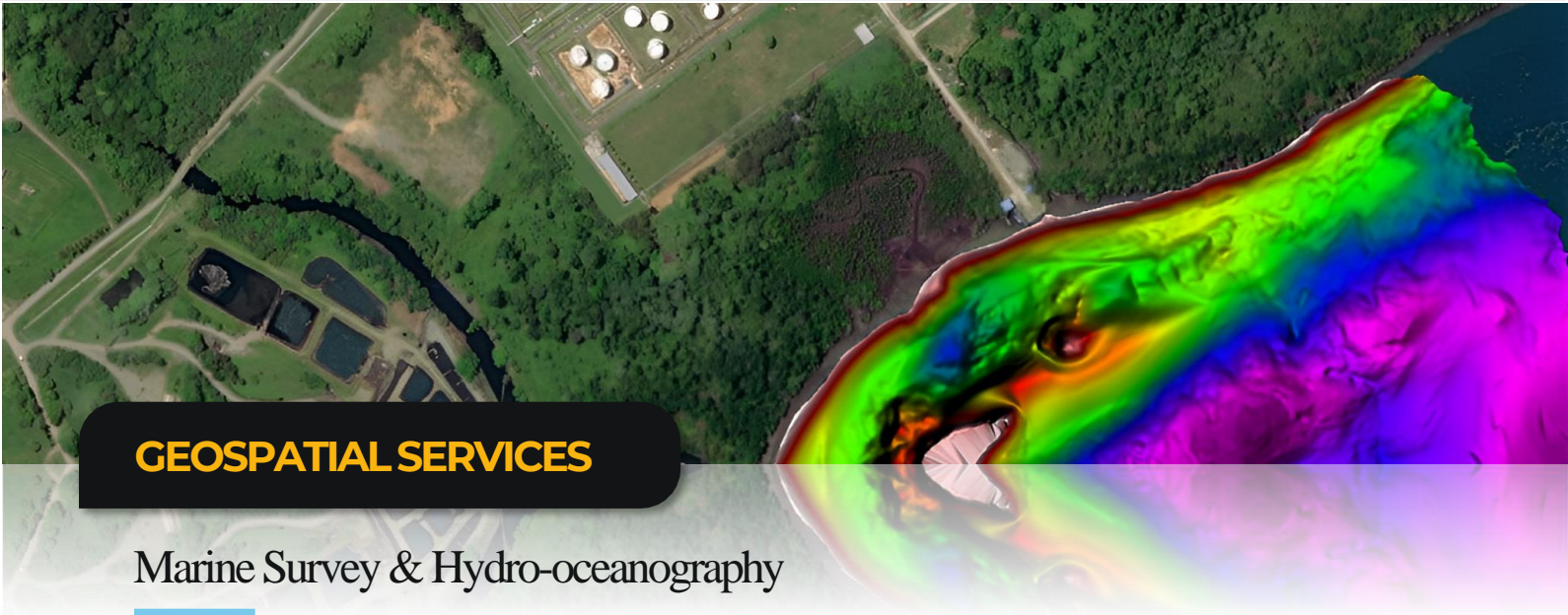




SURVEYING & MAPPING SERVICES

- Oil and gas surveying & mapping
- Utility detection and mapping
 - Groundradar (GPR) Surveys
 - Sidescan Sonar (SSS) Surveys
 - Sub Bottom Profiling (SBP) Surveys
 - Magnetometer Surveys
- Topographic surveying
- Route line/utility surveying
 - Oil & Gas pipeline
 - Roads, highways , & railway
 - Transmission line
 - Telecom lines and facilities
- Hydrographic and bathymetric surveying.
- Mining and exploration surveys
- Engineering design /survey
 - Deformation monitoring
 - Construction Staking
 - As built surveys
 - Longitude and cross-sectional profile
 - Contour generation
 - Digital terrain modeling
 - General infrastructure

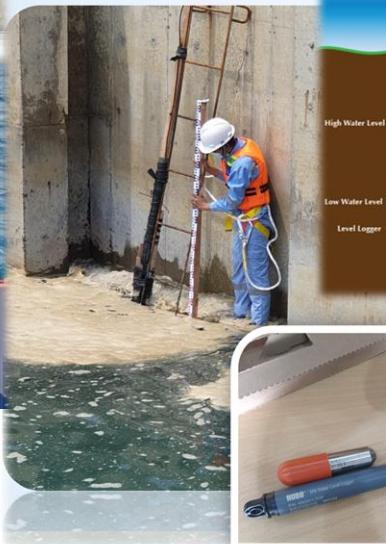
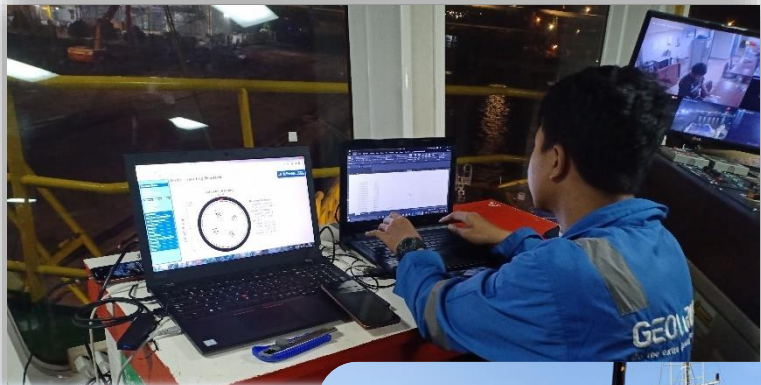




GEOSPATIAL SERVICES

Marine Survey & Hydro-oceanography

- Positioning Survey Services
- Bathymetry (MBES & SBES) surveys
- Sub-Bottom Profiling (SBP)
- Side Scan Sonar (SSS) surveys
- Magnetometer surveys
- Met-ocean surveys

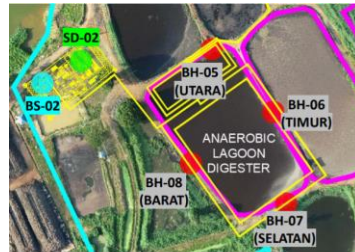
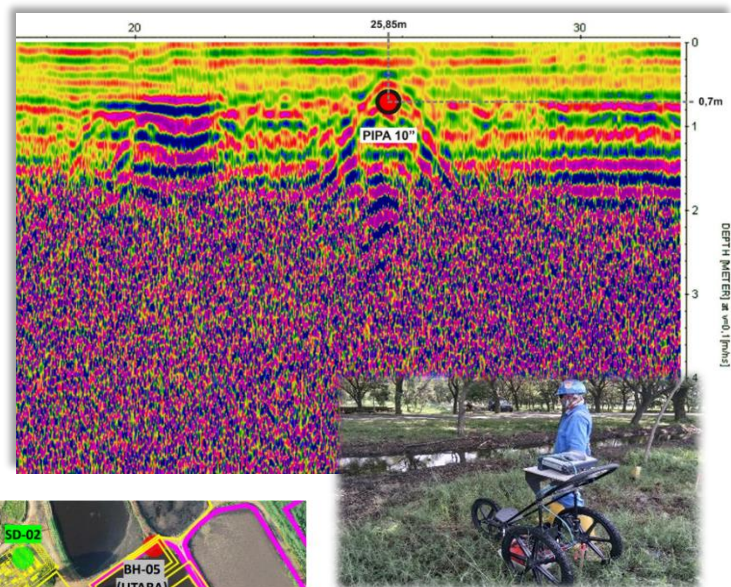




GEOSCIENCE SERVICES

Geophysical & Geological

- Gravity survey
- Ground Magnetic survey
- Geopenetrating Radar
- IP, SP & Resistivity survey
- Geophysical logging
- Core analysis & rock description
- Geological mapping & Mineral Petrography
- Wellsite Geology
- General geological assessment & research
- Mine design & planning
- Mine operation supervision



Geotechnical & Drilling

- Vertical, incline and horizontal drilling
- Exploration drilling
- Core drilling
- Standard Penetration Test (SPT)
- Cone Penetration Test (CPT)
- Soil sampling
- Soil properties laboratory test
- Ground water level monitoring
- Slope Design, Soil, and Rock Stability

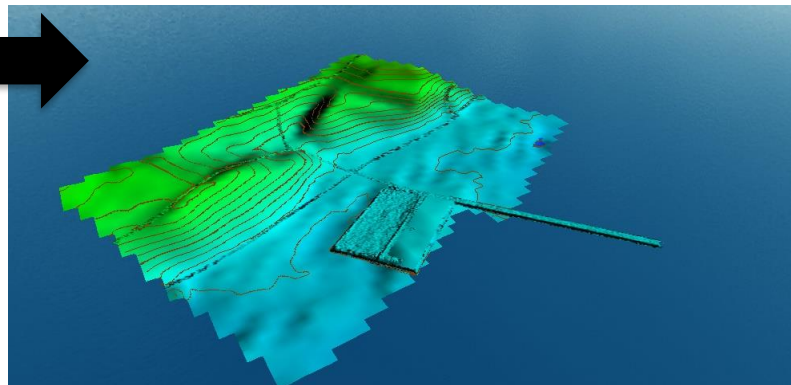
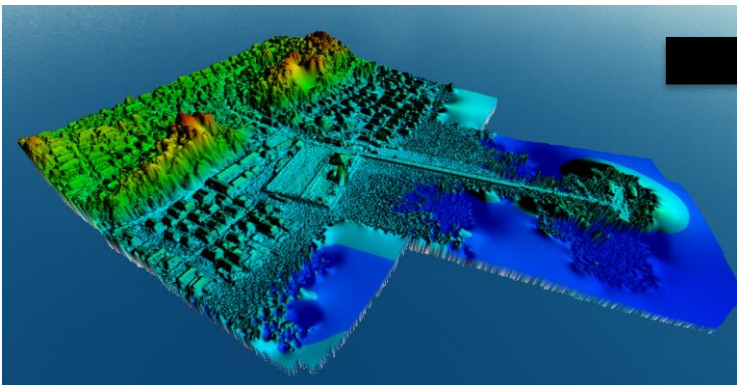
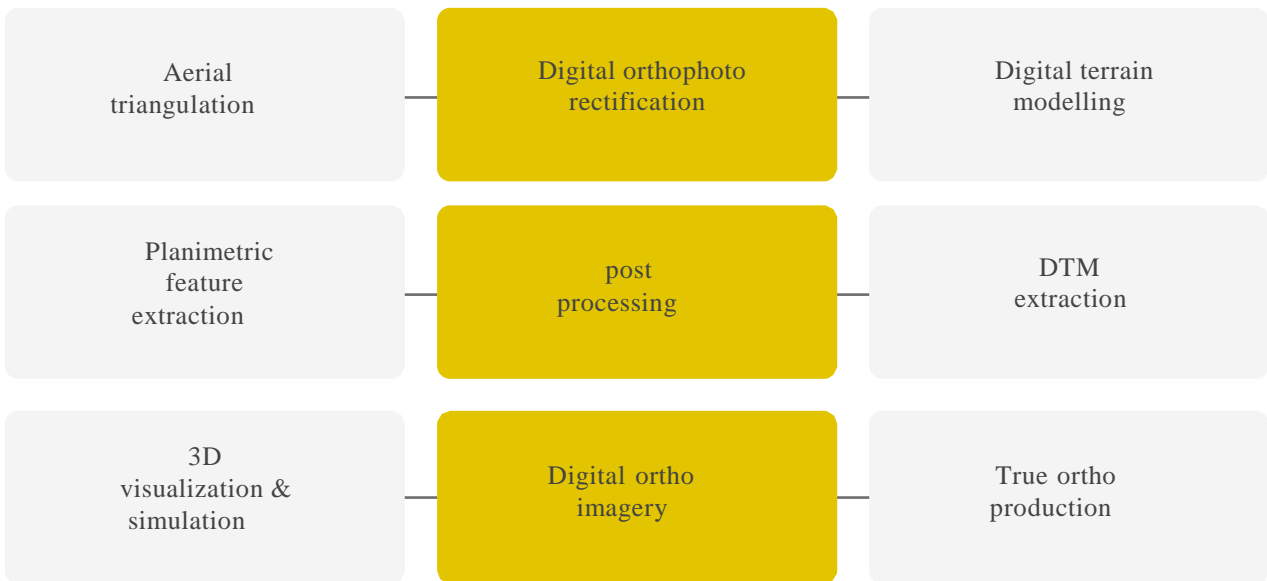




GEOSPATIAL SERVICES

Remote sensing & Photogrammetry

- Photogrammetry & LIDAR
- Airborne Hyper spectral surveys
- Airborne Thermal Imagery Surveys
- Color Infrared Photography
- Satellite Imagery



GEOSPATIAL SERVICES

Environmental sector

- Environmental impact assessment: creating databases at different scales , using the latest satellites images at various resolutions for
- Environmental Impact Assessment
Consultancy service for baseline studies for spatial planning programs

Telecom sector

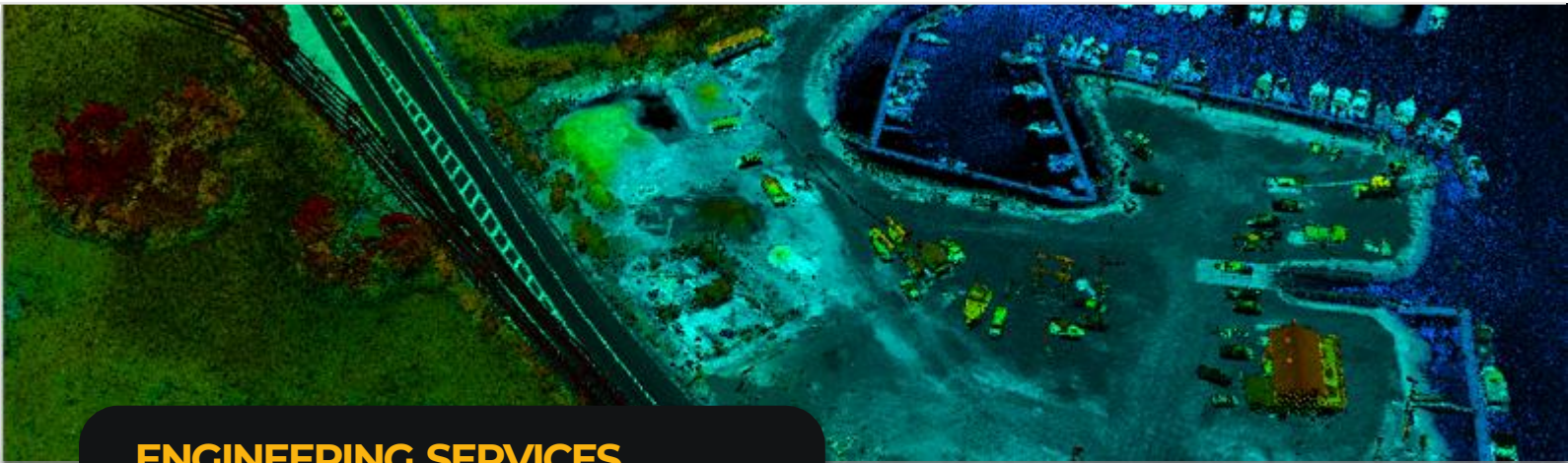
- We create clutter data for telecom network planning through satellite images at diverse resolution.
- We provide Data in a form of digital City models that give information on the height of buildings and type of land- use or land-cover by means of single high resolution images for line of sight studies and micro-cellular network planning .
- We create large-scale land-base data-models for 'optical fiber cable' layout planning using very high-resolution satellite images and GPS aided field data attributes

Water sector

- Water quality mapping
- Survey and database creation of GPS points (Latitude, longitude) collected for each water resource.
- Generating thematic maps based on water quality parameters for all parameters on GIS platform.

Electric and gas Sector

- Electric network survey
- Gas network survey



ENGINEERING SERVICES

As an extra miles, we also provide services in the related site investigation scope of work by commence a collaboration with our trusted partners. We believe all in one service and solution will result in an efficient cost operation and well delivered data integration. We committed to achieve a reliable and proven solution for your engineering needs within on time project schedule.

Site investigation

- Soil investigation
- Visual survey
- Sub-surface exploration
- In-situ testing
- Laboratory testing and analysis of property
- Geophysical survey
- Detailed desk study
- Structure Deformation Monitoring
-

- Feasibility studies
- Detailed Design and Engineering (DED)
- Structural Assessment & Reliability
- Various Structure Integrity Measurement
- Asbuild & Geometry Drawing
- Rebar scan, halfcell potential, hammer test, UPV, Thickness, Hardness etc
- Coastal management
- Risk Assessment



OUR COMMITMENT

Our philosophy is to promote Health, Safety and Environment subject as a focal point of the Company. we share the vision of implementing zero incident to protect our human asset includes:

- Comply with legal rules and regulations which relate to occupational health and safety issues and environmental aspects.
- Recognizing and implementing of HSE as an integral part of improving business performance.
- Achieving a high level of HSE performance, and a commitment to continual cost-effective improvement in performance
- Integration of HSE consideration, including identifying and controlling risks and impacts into decision, plan, and operation.
- Minimizing risk and the prevention of injury, ill health, diseases and incidents.
- Acknowledging that people are the key resource and promoting the general health and safety of employees.
- Ensuring employee involvement, participation, and consultation to gain commitment to the policy and its implementation.
- Visible management commitment, effective communication, and training to ensure environmental protection, as well as the safety and health of our employees and the community.
- Periodically reviewing the policy, the management system and audit of compliance to policy, as a driver of continual improvement.
- Providing appropriate resources to implement this policy, including making it available to the public and employees.

Corporate Social Responsibility

- Volunteering project
- Community support
- Learning & education support
- Donation & aid





CLIENTS & PARTNERS

Our recent clientele



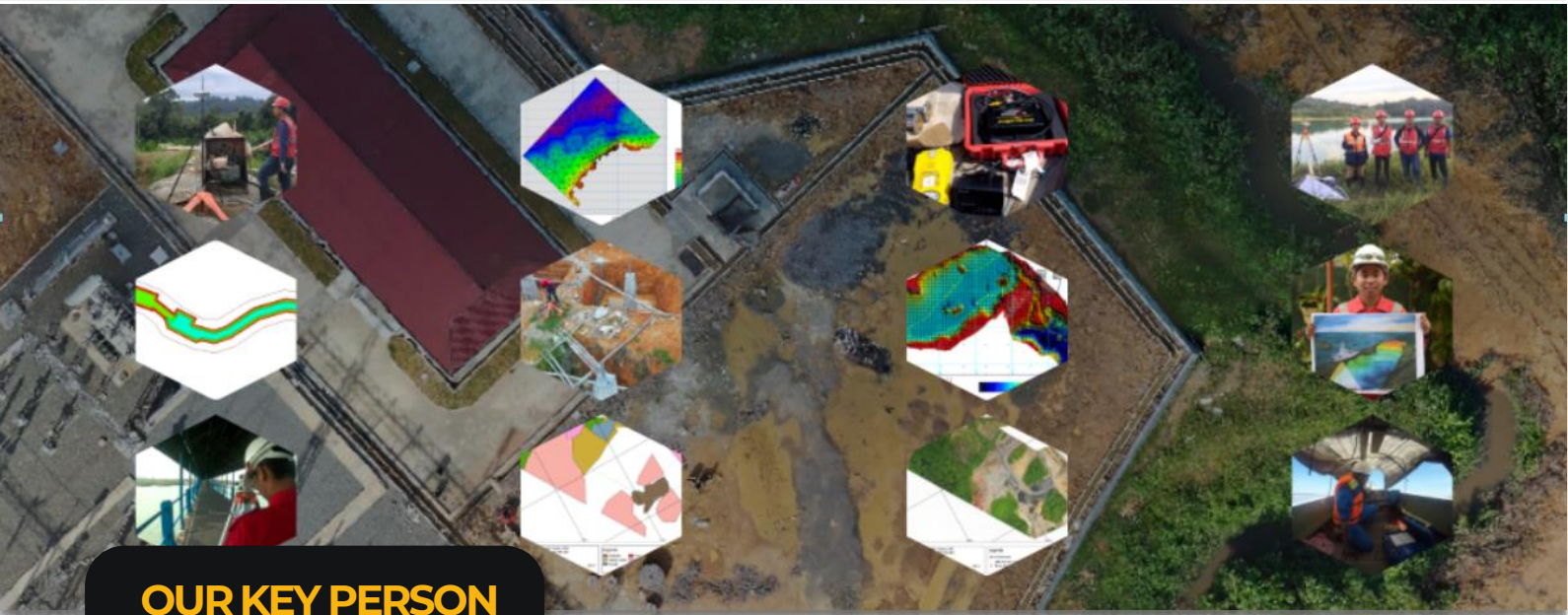
Our partners



Our business implementation

- Oil and Gas exploration
- Energy & Power Plan
- Coastal development
- Port masterplan
- Mining operation
- Industrial development
- Construction & Supervision
- Infrastructure
- Assessment & monitoring
- Feasibility of studies
- Forest cadaster
- Geodetic survey geodesy
- Geographic standards
- Cadaster
- Land preparation
- Land registration
- Land titling
- Mining cadaster
- Remote sensing
- Training





OUR KEY PERSON



Mikhael Mangopo, ST MT
 Founder & Director

Mikhael enhance his professional skills through a continuous learning process in various project experience. He is dynamic, adaptable, visionary, motivated, and results oriented person. His vision is to bring a valuable contribution towards the organization’s achievements

Ir. Reza Bakti Nugraha, ST
 BD & Marketing Director

Reza finished his bachelor degree in engineering programme but lately he give more attention to marketing strategy and business development. With his innovative mindset, Reza believe that our team will able to provide an outstanding performance in the industry



Rifakhryza Aqfala M, ST
 Technical Principal

Fakhry has more than 7 years experiences in offshore & hydrography survey industry



Ir. Harsono Subagyo
 Surveying Expert

Harsono has more than 30 years experience In surveying and hydrography survey industry

EXPERIENCE RECORDS

USER/CLIENT	DESCRIPTION OF PROJECT	DATE
PT SAH; PT Ditori Geokarya Teknik	Bathymetric – Hydro Oceanography Survey & Soil Investigation Service for Detailed Engineering Design (DED) of Pelsus Mutiara PT GNI Morowali, Sulawesi Tengah	2022
Badan Pertanahan Nasional (BPN)	Pembuatan Peta Dasar Pertanahan Skala 1:2500 menggunakan PUNA di Provinsi Kalimantan Timur	2022
IKPT; PT AGS	Bathymetric Multibeam Survey for FEED of DHT Project at Pertamina RU IV Cilacap, Jawa Tengah	2022
IKPT; PT AGS	Geophysical Site Survey and Thermal Dispersion Study for New SWI and Discharge Facility Project at Pertamina RU VII Kasim, Papua Barat	2022
IKPT; PT AGS	Geophysical Site Survey and Metocean Study for SWI Facility Project at Pertamina RU II Dumai, Riau	2022
Kemenhub; PT Sarana Antar Nusa Perekayasa	Bathymetric – Topography Survey Services for Delineation of Port and Harbour Area of Interest in Pelabuhan Kaledupa, Sulawesi Tenggara	2022
PHE OSES; PT CCSI	Positioning Survey Services for Cable Laying Operation at Pulau Pabeloka-Platform Rama P-Platform Cinta P-Platform Nora A	2022
Pertamina EP; PT LAPI ITB	Geophysical Site Survey for NEW DHT Project at Pertamina RU II Dumai, Riau	2022
PT PP Persero	Geophysical UXO Survey for Hazard Assessment of Dredging Works in Benoa, Bali	2022
Kemenhub; PT Ditori Geokarya Teknik	Bathymetric – Hydro Oceanography Survey & Soil Investigation Service for Detailed Engineering Design (DED) of Pelabuhan Midai, Kalimantan Barat	2022
Kemenhub; PT Ditori Geokarya Teknik	Bathymetric – Hydro Oceanography Survey & Soil Investigation Service for Detailed Engineering Design (DED) of Pelabuhan Midai, Kalimantan Barat	2022
Kemenhub; PT Ditori Geokarya Teknik	Bathymetric – Hydro Oceanography Survey & Soil Investigation Service for Detailed Engineering Design (DED) of Pelabuhan Carocok, Sumatera Barat	2022
PT PP Persero	Bathymetric Multibeam Survey for MCO Dredging Works in Benoa, Bali	2022
PLN Engineering	Bathymetric Multibeam for Intake Channel Monitoring in PLTU Lontar, Banten	2022
PT Geo Nusa Scientia	Bathymetric Survey for Water Resources Plan in Batur Lake, Bali	2022
PT PP Persero	Bathymetric Multibeam & SBP Survey for Kalibaru Reclamation Project in Tanjung Priok, Jakarta	2021
PT PP Persero	Sedimentation Study and Modelling Services for Dredging Initial Works in Benoa, Bali	2021
PT Geo Nusa Scientia	Bathymetric Multibeam Survey for Jetty Development in Barito River, Kalimantan Tengah	2021
Badan Informasi Geospasial (BIG)	Kesepakatan Teknis Batas Wilayah Administrasi Desa/ Kelurahan Paket 4 di sebagian Provinsi Jawa Tengah	2021
Kilang Pertamina Internasional; JGC Indonesia	Topographic Survey Service for Demineralization Water Plant Project of Kilang Pertamina Internasional Cilacap, Jawa Tengah	2021
PT Elshaddai Mulia; PT MHK	Soil Investigation Service for Detailed Engineering and Design (DED) of Jetty in Gebe Island, Halmahera	2021
PT PP Persero	Bathymetric Survey for Conveyor Project Plan in KITB Batang, Jawa Tengah	2021
PT Meares Sopotan Mining; PT Zenit	Bathymetric – Met Ocean Survey for Feasibility Study of Jetty Development in Toka Tinding, Sulawesi Utara	2021
AECOM Indonesia	Topography LIDAR Survey & Soil Investigation Service of Singkawang International Airport Project in Singkawang, Kalimantan Barat	2021
PT SJR; PT Nusa Dinamika Solusindo	Bathymetric – Met Ocean Survey & Detailed Engineering Design (DED) of Jetty Development in Muara Pangulir, Sumbawa	2021
Kemenhub; PT Ditori Geokarya Teknik	Bathymetric – Hydro Oceanography Survey & Soil Investigation Service for Port Masterplan (RIP) of Pelabuhan Beo & Dapalan, Sulawesi Utara	2021
PT PP Persero	Bathymetric Multibeam & SBP Survey for Pre-Dredging Works in Benoa, Bali	2021
Kemenhub; PT Ditori Geokarya Teknik	Bathymetric – Hydro Oceanography Survey & Soil Investigation Service for Detailed Engineering and Design (DED) of Pelabuhan Arrar, Papua Barat	2021
Angkasa Pura Logistics; PT LAPI ITB;	Topographic Survey & Soil Investigation Service for Warehouse Design and Build of APL in Surabaya, Jawa timur	2021
PT Suropati Hydro Energi	Bathymetric Multibeam Survey for Sedimentation Study in PLTU Lontar, Banten	2021
Kemenhub; PT Ditori Geokarya Teknik	Bathymetric – Hydro Oceanography Survey & Soil Investigation Services for Detailed Engineering and Design (DED) of Pelabuhan Sirombu, Nias	2021
PT Sella Putri Wulandari (SPW)	Earthworks, Bathymetry, Metocean Survey & Geotechnical Investigation for SPW Seaport Development Project in Bojonegoro, Banten	2021
Adhi Karya; PT Panca Duta Prakasa	Bathymetric and Topographic Survey for Detailed Engineering And Design S2P Shore Protection Kabupaten Cilacap Jawa Tengah	2021
CSTS; Promix Mucoind MKE Joint Operation	Provision of manpower (surveyor) support services to LNG Tangguh Train 3 extension Project	2021

USER/CLIENT	DESCRIPTION OF PROJECT	DATE
Gree Energy & Bunitama Group	Earthworks, Topography Survey and Geotechnical Investigation for Biogas Powerplan Project in Pundu PNBM Site, Kalimantan Tengah	2020
Gree Energy & Bunitama Group	Earthworks, Topography Survey and Geotechnical Investigation for Biogas Powerplan Project in Pundu PNBM Site, Kalimantan Tengah	2020
Pertamina Badak Arun Solusi (PBAS); PT Dinamaritama	Bathymetric and Topographic Survey for Jetty Revitalisation Fuel Terminal Fak-Fak PT PERTAMINA – Papua Barat	2020
Pertamina Badak Arun Solusi (PBAS); PT Dinamaritama	Site Investigation for Jetty Revitalisation Fuel Terminal Jayapura PT PERTAMINA – Papua Barat	2020
Dinas PU Kab. Bekasi; PT Alocita Mandiri	UAV Aerial Photogrammetry Survey and Mapping for Setu Road Expansion Plan	2020
Kemenhub RI; PT Ditori Geo Karya	Hydrography and Oceanography Survey for Tj.Silopo Port Detail Engineering Design, Lampung	2020
Waskita Modern Realty	Topography and Aerial mapping for land development project in Bekasi, Jawa Barat	2020
PT SIEMENS INDONESIA	Staking out and position monitoring of steel support installation for Gas Insulated line (GIL) construction project	2020
Kemenkeu RI	Topography survey for land development of Kemenkeu asset in Kalimantan tengah	2020
CSTS; Promix Mucoind MKE Joint Operation	Provision of manpower (surveyor) support services to LNG Tangguh Train 3 extension Project	2020
Forever Oceans Indonesia	Bathymetry and Geophysical Survey Services for Aquaculture development project in North Manado Sea	2020
PLN; PT Virama	Geodetic control point establishment and aerial mapping for Talisayan SUTT Transline tower routing project Tanjung Redeb, Kalimantan Timur	2019
PT Arya Jasa	Topography survey and Aerial mapping for Trans-Sulawesi road development project	2019
PT SIEMENS; PT RDU	Staking out and position monitoring of steel support installation for Gas Insulated line (GIL) construction project Bekasi, Jawa Barat	2019
PT SANP	Hydro-Oceanography & Bathymetry Survey for Port	2019
PT SIEMENS; PT RDU	Topography Recheck Survey for 150kV Transline Medco Ranch Power Riau 250MW IPP Project Pekanbaru, Riau	2019
PT LAPI GTC	Elevation Monitoring of Railway Installation for Jetty	2019
PT Patra Jaya	The Application of Terrestrial Mapping in Chemical Industries	2019
PT LAPI GTC	Topography Mapping for Geothermal Power Plan	2019
Waskita Realty; PT WALS	UAV Aerial Photogrammetry Survey and Mapping for SUTT plan PLN Samarinda-Kalimantan Timur & Malinau- Kalimantan Utara	2019
MGS; LAPI ITB	Dredging Volume Calculation and Analysis for Pertamina RU IV Cilacap & Pertamina III Plaju Port Development	2019
Serpong Garden	UAV Aerial Photogrammetry Survey and Mapping for Residence Plan Serpong Garden 2 Tangerang Selatan, Banten	2019
PLN; PT Virama	UAV Aerial Photogrammetry Survey and Mapping for SUTT plan PLN Samarinda-Kalimantan Timur & Malinau- Kalimantan Utara	2019
Serpong Garden	UAV Aerial Photogrammetry Survey and Mapping for	2018
PT LAPI GTC	UAV Aerial Photogrammetry Survey and Mapping for Coal	2018
PT Hegar Daya	UAV Aerial Photogrammetry Survey and Mapping for Telaga Asih Road Expansion Plan Dinas Pekerjaan Umum Kabupaten Bekasi Bekasi, West Java	2018
PT Intimulya	UAV Aerial Photogrammetry Survey and Mapping for Warung	2018
PT MMI; PT GEN	UAV Aerial Photogrammetry Survey and Mapping for PT MMI Rantau Bakula Site Plan	2018
Masjid Istiqlal	Topographic Survey for Plaza Istiqlal Development Plan	2018
Studio66	Bathymetric Survey for Port of Pomako Feasibility Study	2018
PT LKKB	Stake Out Survey for LANAL Mako Morotai Infrastructure Plan	2018
PT LAPI GTC	Hydrography and Oceanography Survey and Modelling for Port of	2018
DNA Consultant	UAV Aerial Photogrammetry Survey and Mapping for Cricket	2018
PT DIC	UAV Aerial Photogrammetry Survey and Mapping Workshop & Training for PT DIC Internal Development	2018
PT LAPI GTC	Bathymetric Survey for Port of Semen Kaltim Feasibility Study in	2017
Pelindo II; PT DIC	UAV Aerial Photogrammetry Survey and Mapping for Port of	2017
PT Krinotek	UAV Aerial Photogrammetry Survey and Mapping for Babelan	2017
PT Karimata	UAV Aerial Photogrammetry Survey and Mapping for Tarumajaya	2017
PT Cikenceng; PT GEN	UAV Aerial Photogrammetry Survey and Mapping for Cijulang	2017
Bunyuta Tapa Energy; PT GEN	Bathymetric and Topographic Survey for Pre Seismic Operation	2017

GEOVARUNA

Go the extra miles through excellence

LOCATE US

PT. GEOVARUNA TEKNOLOGI INDONESIA

Geospatial Geoscience and Engineering Services

Ruko 42E Jalan Dakota No.42E Bandung 40175 - 022 20569987

 operation@geovaruna.com  www.geovaruna.com

